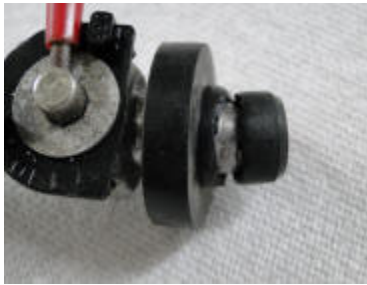


(SB-0001 Gas Tank Grommet failure) - As reported by Kasperwing pilot

the rubber grommet that connects the fuel line petcock to the gas tank had failed. While the fuel line was still (barely) in place this failure would allow the fuel line to COMPLETELY separate from the tank making for an IMMEDIATE dead-stick landing "wherever". What I am doing now is to connect my fuel line to the tank using a "bulkhead" type of connector I found at a local marine store. I suggest you all check yours and make the appropriate repairs.



Failed Grommet



Recommended Replacement